



Oct.2025

## Tourist Facility Information

<b>Dazaifu Tenmangu Shrine</b> 092-922-8225 Opening time At 6:30 AM (at 6:00 AM at the earliest times of year) Closing time At 6:30 PM from December to March, At 7:30 PM from June to August At 7:00 PM at other times Open all day and night during New Year holidays (12/31~1/3) * Closing time is subject to change at any time	<b>Kyushu National Museum</b> 050-5542-8600 Hours 9:30 AM~5:00 PM (last admission at 4:30 PM) Admission Permanent exhibition: Adults ¥700 College students ¥350 * Free admission for any individual with a disability certificate and accompanying caretaker, visitors below 18 years old and visitors 70 years old and above. * Special exhibitions are separately charged. Closed Mondays (the following day if Monday is a national holiday) End-of-year holidays
<b>Dazaifu Tenmangu Museum</b> 092-922-8225 Hours 9:00 AM~4:30 PM (last admission at 4:00 PM) Admission Adults ¥500 (¥400) High school students ¥200 (¥100) Elementary and Junior high school students ¥100 (¥50) * ( ) rate for groups of 30 or more visitors Closed Mondays (open if Monday is a national holiday)	<b>Kanko Historical Museum (Dazaifu Tenmangu Shrine)</b> 092-922-8225 Hours 9:00 AM~4:30 PM (last admission at 4:00 PM) Admission Adults ¥200 (¥150) High school and College students ¥150 (¥80) Elementary and Junior high school students ¥100 (¥50) * ( ) rate for groups of 30 or more visitors Closed Tuesdays and Wednesdays
<b>Dazaifu Tenmangu Shrine Parking Center</b> 092-924-2843 Hours 8:00 AM~6:00 PM (last entry at 5:00 PM) Open all day and night during New Year holidays (12/31~1/3) * Closing time is subject to change at any time Parking Fee Buses ¥2,000 Minibuses ¥1,300 Cars ¥500 Motorbikes ¥250	<b>Dazaifu Amusement Park</b> 092-922-3551 Hours 10:30 AM~6:00 PM on weekdays 10:00 AM~5:00 PM on weekends and national holidays Admission Adults ¥700 (¥600) 65 years old and above ¥600 (¥600) 3 years old to Elementary school students ¥500 (¥400) * ( ) rate for groups of 20 or more visitors Closed Irregular
<b>Homangu Kamado Shrine</b> 092-922-4106 Hours 8:30 AM~6:00 PM (Amulet office)	<b>Sakamoto Hachimangu Shrine</b> 092-928-3100 Hours 10:00 AM~6:00 PM (Shrine office) Open Saturdays, Sundays and National holidays
<b>Dazaifu Exhibition Hall</b> 092-922-7811 Hours 9:00 AM~4:30 PM Admission Adults ¥200 High school and College students ¥100 Elementary and Junior high school students ¥50 (¥40) Closed Mondays (the following day if Monday is a national holiday) 12/28~1/4	<b>Dazaifu Fureai Museum</b> 092-928-0800 Hours 9:00 AM~4:30 PM Closed Mondays (the following day if Monday is a national holiday) 12/28~1/4
<b>Kanzeonji Temple Exhibition Hall</b> 092-922-1811 Hours 9:00 AM~5:00 PM (last admission at 4:30 PM) Admission Adults ¥600 (¥400) High school and College students ¥400 (¥300) Elementary and Junior high school students ¥150 (¥100) * ( ) rate for groups of 20 or more visitors	<b>Mizuki Hall</b> 092-555-8455 Hours 9:00 AM~4:30 PM Closed Mondays (the following day if Monday is a national holiday) 12/28~1/4
<b>Dazaifu Hall</b> 092-916-8700 Hours 10:00 AM~6:00 PM Closed Wednesdays (the following day if Wednesday is a national holiday)	<b>Publisher: Dazaifu Tourist Association</b> 3-2-3 Saifu, Dazaifu City, Fukuoka Prefecture 818-0117 TEL (092) 925-1899 / FAX (092) 925-1866 This guide map utilizes History and Culture environmental tax.

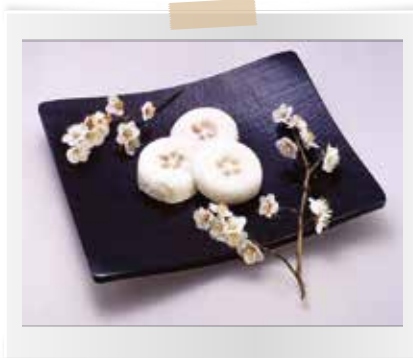
## Dazaifu souvenirs

### Dazaifu specialty Umegae-mochi

Umegae-mochi is a toasted rice cake with sweet red bean paste inside. It is stamped with the plum blossom pattern that is the symbol of Dazaifu Tenmangu Shrine.

The origin of Umegae-mochi  
Sugawara Michizane was exiled from Kyoto and spending a miserable life in Dazaifu.

Out of pity for his circumstance, an old lady who lived nearby gave him a rice cake decorated with a plum tree twig to cheer him up.

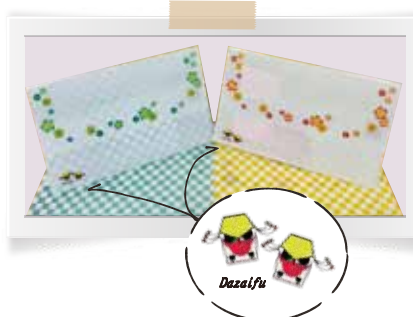


### Dazaifu folk craft Kiuso



Kiuso is a wooden hand-carved craft. It represents that a bullfinch perches on a tree and spread its wings. People believe that bullfinch is a messenger of a god and bring good luck.

### Plastic folder



Multipurpose antibacterial plastic folder. It is only available at Dazaifu City Tourist Information Center. (sizes: 140 x 220mm)

## Events at Dazaifu Tenmangu Shrine



\*Summer Tenjin Festival

<b>Jan.</b> — Onisube Festival (7th) — Usokae Festival (7th) <b>Feb.</b> — Plum Blossom — Setsubun Festival (3rd) — Plum Blossom Ceremony (25th) <b>Mar.</b> — Poetry Composition Ceremony (first Sunday) <b>May</b> — Fresh green leaves <b>June</b> — Irises — Great Purification Ceremony (30th)	<b>July</b> — Tanabata Festival (7th) — Summer Tenjin Festival (24th, 25th) <b>Sep.</b> — Jinkoshiki (The Grand Procession of Sugawara Michizane) <b>Oct.</b> — Special Prayer for Success in Examination <b>Nov.</b> — Chrysanthemum exhibition <b>Dec.</b> — Great Purification Ceremony (31st)
---	---

## Route Map to Dazaifu

### From Fukuoka Airport Domestic Terminal

Take Fukuoka City Subway and Nishitetsu Tenjin Omuta Line  
about 50 minutes

Go to International Terminal by free shuttle bus and take Dazaifu liner bus "Tabito"  
about 40 minutes

### From Nishitetsu Fukuoka (Tenjin) Station

Take Nishitetsu Tenjin Omuta Line and Dazaifu Line  
about 30 minutes

### From JR Hakata Station

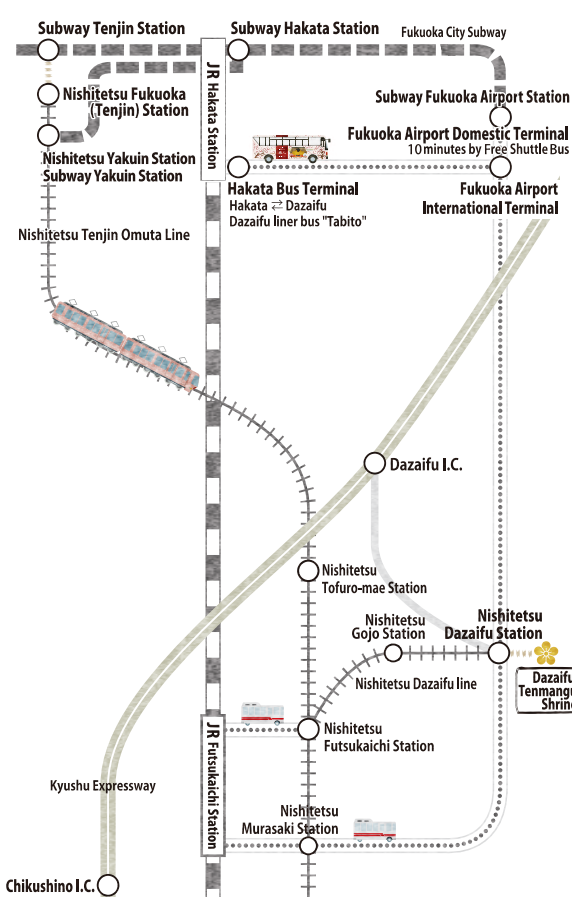
Take Dazaifu liner bus "Tabito"  
about 40 minutes

### From JR Futsukaichi Station

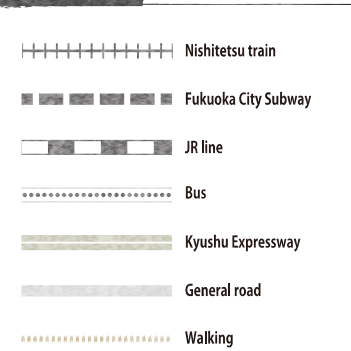
about 15 minutes by car

### From Kyushu Expressway

Take Dazaifu I.C. or Chikushino I.C.  
about 15 minutes by car



### Notes



### Dazaifu liner bus "Tabito"



## Dazaifu Tenmangu Shrine

## Area Map



### Information

#### ① Dazaifu City Tourist Information Center

At Nishitetsu Dazaifu Station  
TEL.092-925-1880

> Wheelchair / Stroller rental

Dazaifu Tourist Association  
TEL.092-925-1899

#### ① Dazaifu Hall

Dazaifu Hall (Closed on Wednesdays)  
TEL.092-918-8700

> Wheelchair rental

#### ● Experience making Umegae-mochi



Reservation required for experience : TEL.092-918-8700

#### ● Experience painting Wooden bullfinch birds

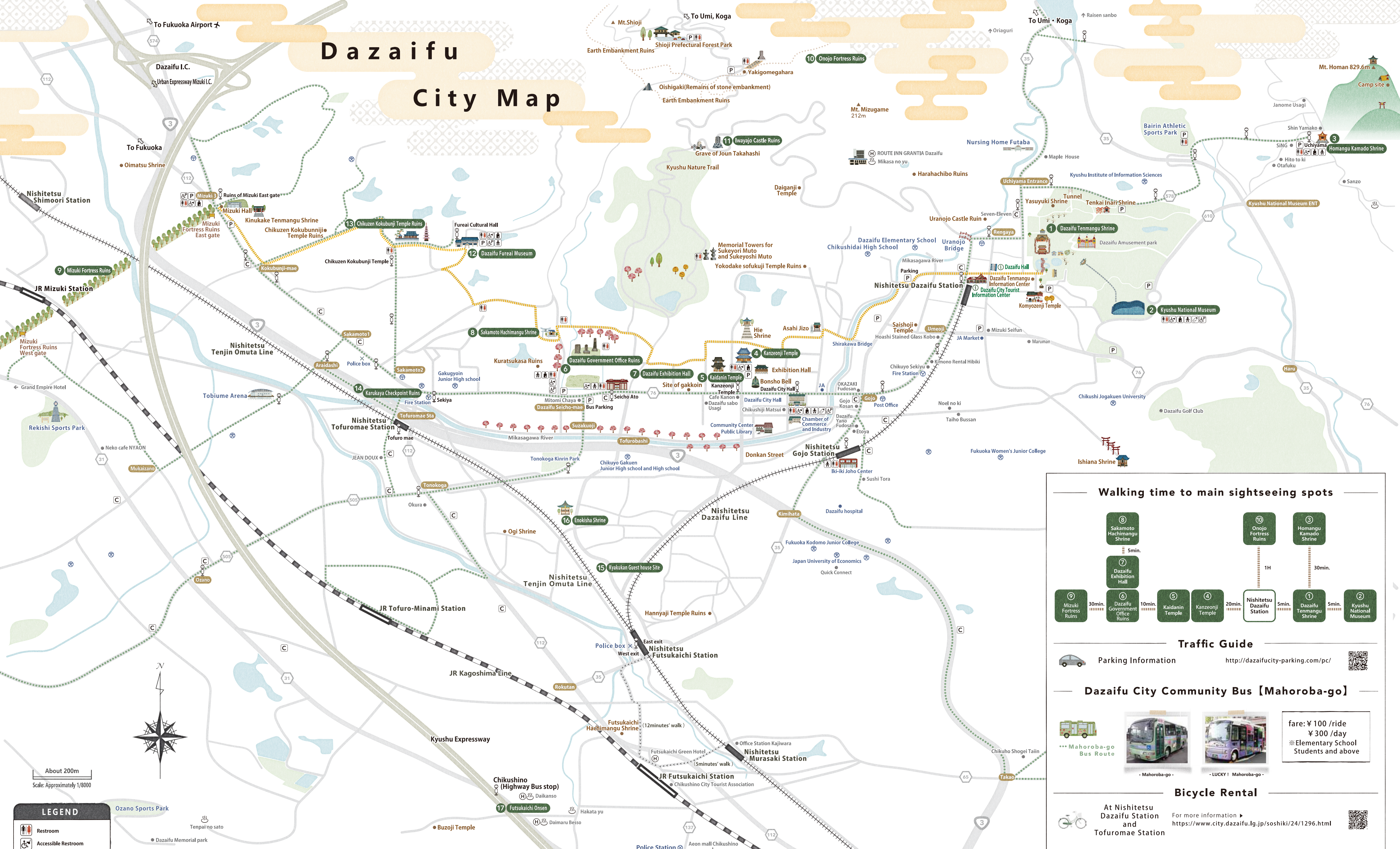


### LEGEND

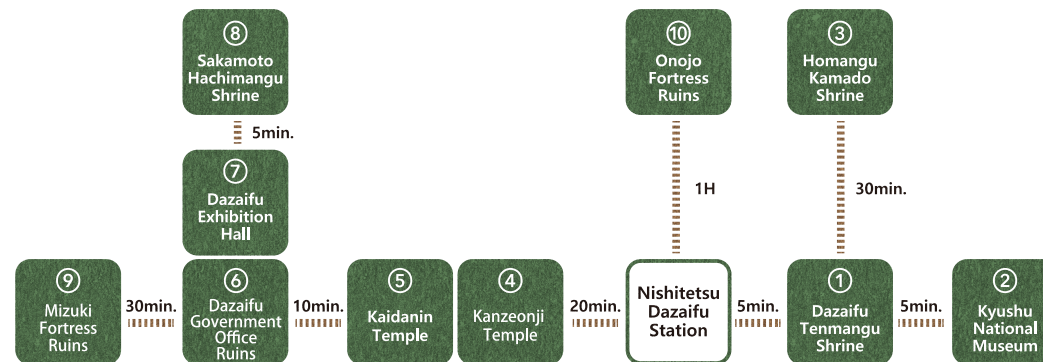
Restroom	Parking	Umegae-mochi rice cake
Accessible Restroom	Accessible Parking	Restaurant
Restroom for ostomates	Wheelchair Rental	Shop
Nursing Room	Smoking area	Cafe
Diaper changing Station	Convenience Store	Others



# Dazaifu City Map



## Walking time to main sightseeing spots



## Traffic Guide



## Dazaifu City Community Bus 【Mahoroba-go】



## Bicycle Rental



## LEGEND

- Restroom
- Accessible Restroom
- Restroom for ostomates
- Accessible Parking
- Parking
- Nursing Room
- Diaper changing Station
- Convenience Store

- City Community bus Mahoroba-go
- Rekishino-sanpo michi (Scenic Route)
- Intersection

<b>16 Enokisha Shrine</b> Highly-ranked public servants from the capital resided here. Sugawara Michizane was exiled from Kyoto to Dazaifu and lived here for 2 years until he passed away.	<b>14 Karukaya Checkpoint Ruins</b> The gateway of Dazaifu. It was said to have been a barrier or a checkpoint.	<b>12 Dazaifu Fureai Museum</b> It is a multipurpose facility that introduces the history and culture of Dazaifu.	<b>10 Onojo Fortress Ruins</b> It was built on top of Mt.Shioji in 665. It consisted of a number of buildings surrounded by a soil circumference. Only the embankment and the foundation stones of about 70 storehouses remain today. National Historic Site	<b>9 Mizuki Fortress Ruins</b> Mizuki is a fortress built in 664 against a possible invasion from Tang(China) and Silla(Korea). It is 1.2km long, 80m wide and 10m high. National Historic Site	<b>8 Sakamoto Hachimangu Shrine</b> The shrine is attracting attention as a place related with the Imperial era name Reira. Reira comes from the preface to Manyoshu which is the Japanese oldest poetry anthology. The preface was written by Otomomo Tabito in plum viewing party in his residence. His residence is said to have been around the shrine.	<b>7 Dazaifu Exhibition Hall</b> It displays items related to ancient Dazaifu, including excavated artifacts, drainage ditch, model of Dazaifu government office. New era name "Reira" related diorama, Feast of Plum Blossoms(artist:Nobuaki Yamamura) is also displayed.	<b>6 Dazaifu Government Office Ruins</b> Ancient Dazaifu Government Office was the center of politics and culture in Kyushu and also at frontier for Japanese diplomacy and defense. All that remains is the huge foundation stones of the original building. National Historic Site	<b>5 Kaidanin Temple</b> It was built within the Kanzeonji Temple complex as a place for delivering the doctrines of Buddhism and the official ordination hall in Kyushu. The other two were Todaiji temple in Nara and Shimotsuke Yakushiji temple in Tochigi. National Historic Site	<b>4 Kanzeonji Temple</b> It was built in memory of the late Empress Saimai by his son, Emperor Tenji. A number of Buddhist statues and bronze Bonsho bell, which is the oldest one in Japan and the national treasure, survives to tell us of its history. National Historic Site	<b>3 Homangu kamado Shrine</b> Kamado Shrine stands on a sacred mountain, Mt. Homan. It is said that it was built the northeasterly direction from Dazaifu to protect Dazaifu government office against the evil spirits. The shrine is famous for bringing good relationship and marriage.	<b>2 Kyushu National Museum</b> It's the 4th National Museum after Tokyo, Kyoto and Nara. It is based on the concept of "Understanding Japanese culture from the Asian perspective".	<b>1 Dazaifu Tenmangu Shrine</b> Sugawara Michizane(845-903) was a court noble, politician and scholar. He was demoted to Dazaifu because of the slander and political chicanery of his rival and died two years later. The shrine is built on his grave and enshrined him as the deity of learning, culture, and the arts. The main hall is under major renovations until 2026. Visitors can go to the temporary hall.
<b>17 Futsukaichi Onsen</b> The history of this hot spring dates back to 8th century. Officials of Dazaifu and priests frequently visited here.	<b>15 Kyakukan Guesthouse Site</b> Accommodations for foreign envoys who came to Dazaifu around 8 to 9 century. National Historic Site	<b>13 Chikuzen Kokubunji Temple Ruins</b> One of the national temples constructed in each province in accordance with Emperor Shomu's imperial decree in 741. It was a large temple with many buildings. National Historic Site	<b>11 Iwayajo Castle Ruins</b> In 1586, more than 700 soldiers led by Joun Takahashi who was a general of Otomo Clan of Oita were defeated here by the large number of Shimazu army and died at Iwaya fortress. The view of Dazaifu city from the fortress is beautiful.	<b>9 Mizuki Fortress Ruins</b> Mizuki is a fortress built in 664 against a possible invasion from Tang(China) and Silla(Korea). It is 1.2km long, 80m wide and 10m high. National Historic Site	<b>8 Sakamoto Hachimangu Shrine</b> The shrine is attracting attention as a place related with the Imperial era name Reira. Reira comes from the preface to Manyoshu which is the Japanese oldest poetry anthology. The preface was written by Otomomo Tabito in plum viewing party in his residence. His residence is said to have been around the shrine.	<b>7 Dazaifu Exhibition Hall</b> It displays items related to ancient Dazaifu, including excavated artifacts, drainage ditch, model of Dazaifu government office. New era name "Reira" related diorama, Feast of Plum Blossoms(artist:Nobuaki Yamamura) is also displayed.	<b>6 Dazaifu Government Office Ruins</b> Ancient Dazaifu Government Office was the center of politics and culture in Kyushu and also at frontier for Japanese diplomacy and defense. All that remains is the huge foundation stones of the original building. National Historic Site	<b>5 Kaidanin Temple</b> It was built within the Kanzeonji Temple complex as a place for delivering the doctrines of Buddhism and the official ordination hall in Kyushu. The other two were Todaiji temple in Nara and Shimotsuke Yakushiji temple in Tochigi. National Historic Site	<b>4 Kanzeonji Temple</b> It was built in memory of the late Empress Saimai by his son, Emperor Tenji. A number of Buddhist statues and bronze Bonsho bell, which is the oldest one in Japan and the national treasure, survives to tell us of its history. National Historic Site	<b>3 Homangu kamado Shrine</b> Kamado Shrine stands on a sacred mountain, Mt. Homan. It is said that it was built the northeasterly direction from Dazaifu to protect Dazaifu government office against the evil spirits. The shrine is famous for bringing good relationship and marriage.	<b>2 Kyushu National Museum</b> It's the 4th National Museum after Tokyo, Kyoto and Nara. It is based on the concept of "Understanding Japanese culture from the Asian perspective".	<b>1 Dazaifu Tenmangu Shrine</b> Sugawara Michizane(845-903) was a court noble, politician and scholar. He was demoted to Dazaifu because of the slander and political chicanery of his rival and died two years later. The shrine is built on his grave and enshrined him as the deity of learning, culture, and the arts. The main hall is under major renovations until 2026. Visitors can go to the temporary hall.
Take City Community Bus. Get off at Ruins of Mizuki East gate 20 minutes' walk from Nishitetsu Tofuromae Station				Take City Community Bus. Get off at Ruins of Mizuki East gate 20 minutes' walk from Nishitetsu Tofuromae Station	Take City Community Bus. Get off at Dazaifu Seicho ato 15 minutes' walk from Nishitetsu Tofuromae Station	Take City Community Bus. Get off at Dazaifu Seicho ato 15 minutes' walk from Nishitetsu Tofuromae Station	Take City Community Bus. Get off at Dazaifu Seicho ato 15 minutes' walk from Nishitetsu Tofuromae Station	Take City Community Bus. Get off at Kanzeonji-mae 20 minutes' walk from Nishitetsu Dazaifu Station 10 minutes' walk from Nishitetsu Gojo Station	Take City Community Bus. Get off at Kanzeonji-mae 20 minutes' walk from Nishitetsu Dazaifu Station 10 minutes' walk from Nishitetsu Gojo Station	Take City Community Bus. Get off at Uchiyama 40 minutes' walk from Nishitetsu Dazaifu Station	10 minutes' walk from Nishitetsu Dazaifu Station	5 minutes' walk from Nishitetsu Dazaifu Station