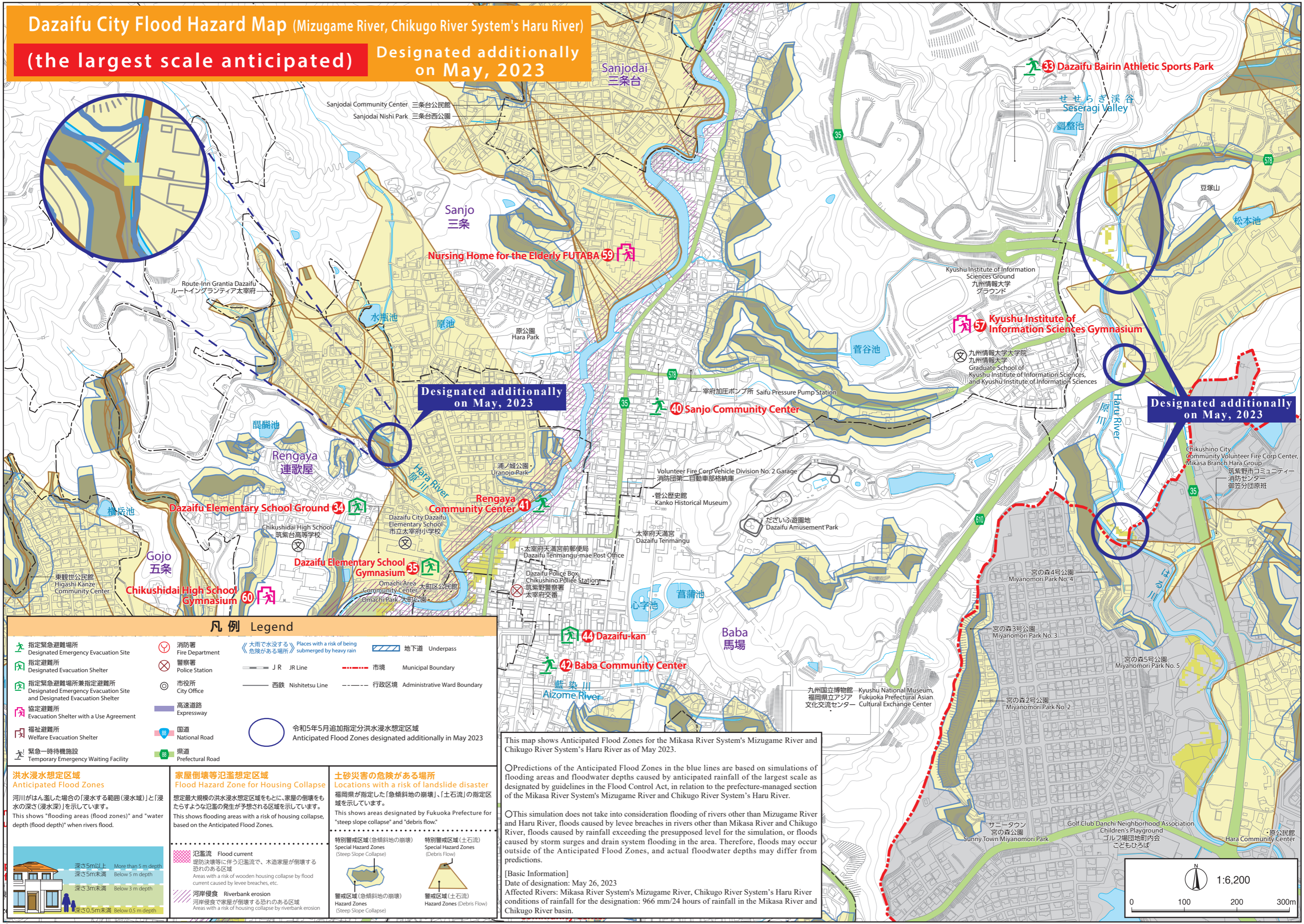


Dazaifu City Flood Hazard Map (Mizugame River, Chikugo River System's Haru River)

(the largest scale anticipated)

Designated additionally on May, 2023

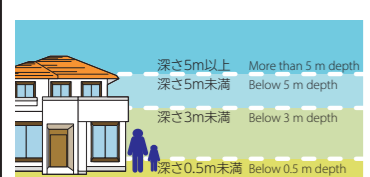


凡例 Legend

- 指定緊急避難場所 Designated Emergency Evacuation Site
- 指定避難所 Designated Evacuation Shelter
- 指定緊急避難場所兼指定避難所 Designated Emergency Evacuation Site and Designated Evacuation Shelter
- 協定避難所 Evacuation Shelter with a Use Agreement
- 福祉避難所 Welfare Evacuation Shelter
- 緊急一時待機施設 Temporary Emergency Waiting Facility
- 消防署 Fire Department
- 警察署 Police Station
- 市役所 City Office
- 高速道路 Expressway
- 国道 National Road
- 県道 Prefectural Road
- 大雨で水没する危険がある場所 Places with a risk of being submerged by heavy rain
- JR JR Line
- 西鉄 Nishitetsu Line
- 令和5年5月追加指定分洪水浸水想定区域 Anticipated Flood Zones designated additionally in May 2023
- 地下道 Underpass
- 市境 Municipal Boundary
- 行政区境 Administrative Ward Boundary

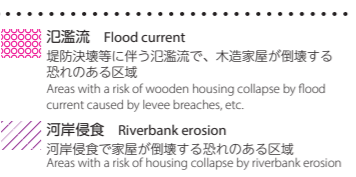
洪水浸水想定区域 Anticipated Flood Zones

河川がはん濫した場合の「浸水する範囲(浸水域)」と「浸水の深さ(浸水深)」を示しています。 This shows "flooding areas (flood zones)" and "water depth (flood depth)" when rivers flood.



家屋倒壊等氾濫想定区域 Flood Hazard Zone for Housing Collapse

想定最大規模の洪水浸水想定区域をもとに、家屋の倒壊をもたらすような氾濫の発生が予想される区域を示しています。 This shows flooding areas with a risk of housing collapse, based on the Anticipated Flood Zones.



土砂災害の危険がある場所 Locations with a risk of landslide disaster

福岡県が指定した「急傾斜地の崩壊」・「土石流」の指定区域を示しています。 This shows areas designated by Fukuoka Prefecture for "steep slope collapse" and "debris flow."

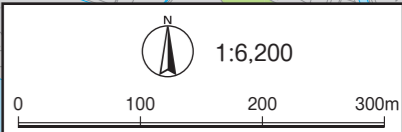


This map shows Anticipated Flood Zones for the Mikasa River System's Mizugame River and Chikugo River System's Haru River as of May 2023.

○Predictions of the Anticipated Flood Zones in the blue lines are based on simulations of flooding areas and floodwater depths caused by anticipated rainfall of the largest scale as designated by guidelines in the Flood Control Act, in relation to the prefecture-managed section of the Mikasa River System's Mizugame River and Chikugo River System's Haru River.

○This simulation does not take into consideration flooding of rivers other than Mizugame River and Haru River, floods caused by levee breaches in rivers other than Mikasa River and Chikugo River, floods caused by rainfall exceeding the presupposed level for the simulation, or floods caused by storm surges and drain system flooding in the area. Therefore, floods may occur outside of the Anticipated Flood Zones, and actual floodwater depths may differ from predictions.

[Basic Information]
Date of designation: May 26, 2023
Affected Rivers: Mikasa River System's Mizugame River, Chikugo River System's Haru River
conditions of rainfall for the designation: 966 mm/24 hours of rainfall in the Mikasa River and Chikugo River basin.



【この地図は、大宰府市長の承認を得て、同市発行の1/2,500基本図を使用し、調整したものである。(承認番号 3大郡第136号)】 (禁無断複製) ©2023 ZENRIN CO., LTD.